





For this Nocturnal and Diurnal Activity print out the night sky for the Nocturnal Animals and print out the day sky for the Diurnal Animals. You may want to print out the image that says diurnal and nocturnal animals below to put above the night and day images.

This is a fun activity to do with children to reinforce learning about Nocturnal and Diurnal animals. You can look up nocturnal and diurnal animals to use with this activity or you can use the ones I have here for you. Have the children place the animals (make sure there are enough animals for each child to have one) on the day side or the night side. If you haven't talked about any of these animals this is a great time to do so.

Make sure you talk about Nocturnal animals and Diurnal animals keeping it very simple.

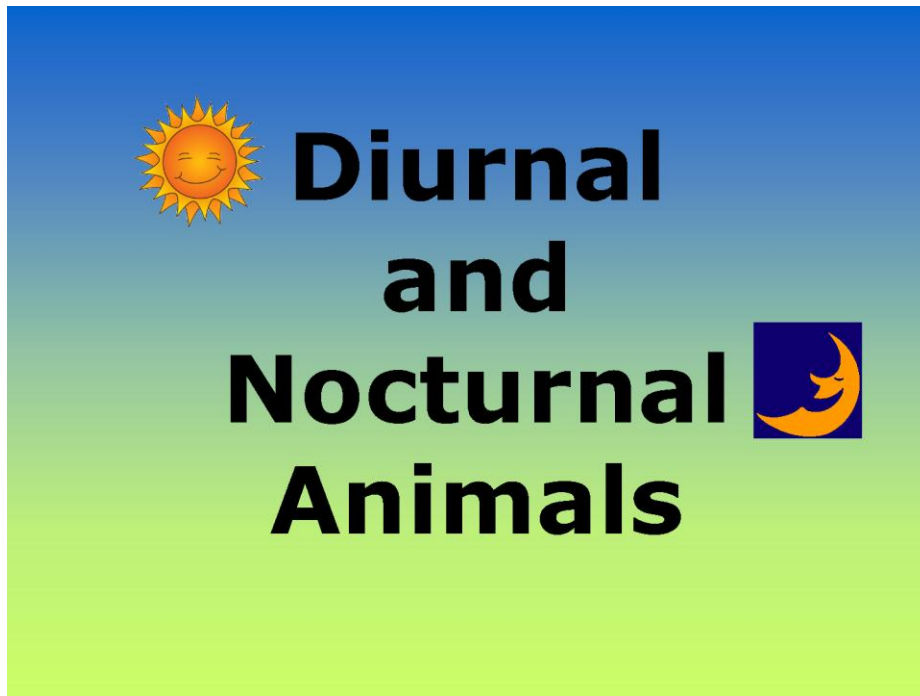
Nocturnal: active at night or awake at night and asleep in the day; Diurnal: active in the daytime or awake in the day and asleep in the night.

Here are a few ways I would do this activity with the children:

- 1 You could hand out one animal for each child then call the children up by name or by the animal in their hand. Have them take turns in placing their animal in the day side or the night side for diurnal or nocturnal animals.
- 2 Have the children close their eyes and you go around the room and hide them. Don't hide them so they can't see them but hide them so they may see a little piece of the

animal sticking out. Make sure you give the children directions to follow before you start. You can say: "I am going to hide these around the room. I want you to find one (or whatever the number is) animal. When you find one animal come back and sit down." Once they find the animal call them up individually to have them put it on the day side or night side for diurnal or nocturnal animals.

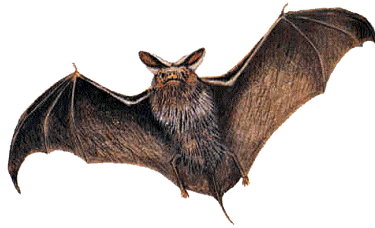
- 3 Place all of the cut outs of the animals into a basket or bag or hat and have the children come up, one at a time, to pick out the animal. They can place it on the day side or night side for diurnal or nocturnal animals.



Nocturnal Animals



Owl



Bat



Fox



Possum



Raccoon



Hedgehog

Diurnal Animals



Moose



Cheetah



Snake



Alligators are BOTH Nocturnal and Diurnal
May be fun to have one that goes in the middle
or print out two to have one on each side.



Red-bellied Monkey